

## E2-Tag Mouse Monoclonal Antibody (4F8)

**CATALOG NUMBER:** C1332

**QUANTITY:** 50 $\mu$ L

**DESCRIPTION:** E2-tag peptide GVSSTSSDFRDR conjugated to KLH. E2-Tag antibody can recognize C-terminal, internal, and N-terminal E2-tagged proteins.

**SPECIFICITY:** The E2 tag antibody can recognize E2 tag fusion proteins.

**ISOTYPE:** IgG1

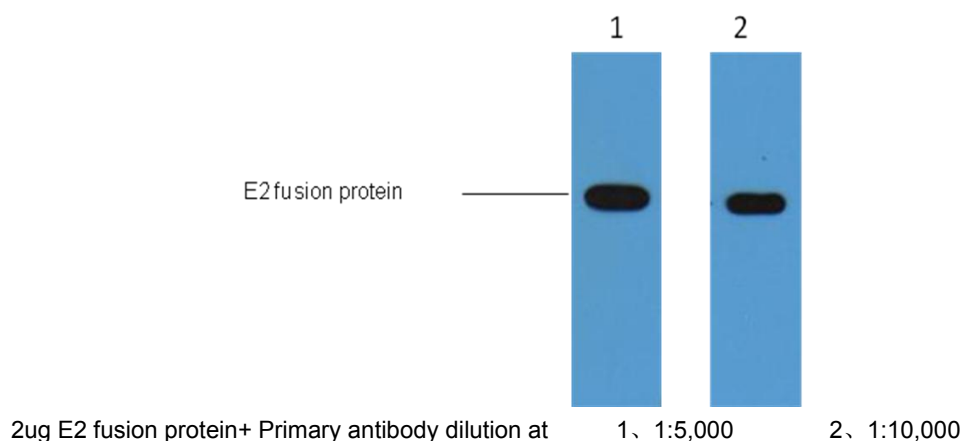
**TESTED APPLICATIONS:** Western Blot

**APPLICATIONS:** WB: 1:5,000

**\*NOTE:** Optimal working dilutions must be determined by the end user

**STORAGE/HANDLING:** PBS, pH 7.4, containing 0.02% sodium azide as Preservative and 50% Glycerol. Store at -20°C. **Do not aliquot the antibody.**

### Western Blot



***For research use only; not for use as a diagnostic.***

***Important Note:*** During shipment, small volumes of product will occasionally become entrapped in the seal of the product vial. For products with volumes of 200  $\mu$ L or less, we recommend gently dislodge any liquid in the container's cap.