

HSV-Tag Mouse Monoclonal Antibody (9D7)

CATALOG NUMBER: C1333

QUANTITY: 50 μ L

DESCRIPTION: HSV-tag peptide QPELAPEDPED conjugated to KLH. HSV-Tag antibody can recognize C-terminal, internal, and N-terminal HSV-tagged proteins.

SPECIFICITY: The HSV tag antibody can recognize HSV tag fusion proteins.

ISOTYPE: IgG1

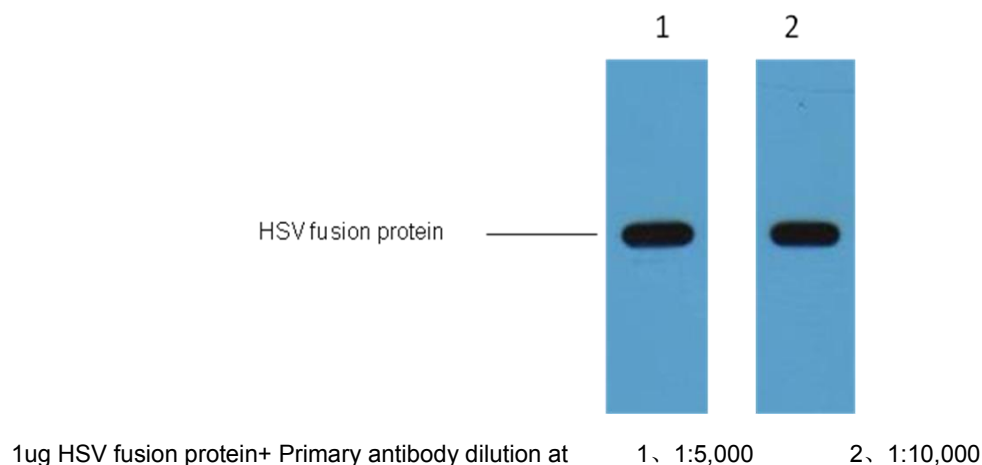
TESTED APPLICATIONS: Western Blot

APPLICATIONS: WB: 1:5,000

***NOTE:** Optimal working dilutions must be determined by the end user

STORAGE/HANDLING: PBS, pH 7.4, containing 0.02% sodium azide as Preservative and 50% Glycerol. Store at -20°C. **Do not aliquot the antibody.**

Western Blot



For research use only; not for use as a diagnostic.

Important Note: During shipment, small volumes of product will occasionally become entrapped in the seal of the product vial. For products with volumes of 200 μ L or less, we recommend gently dislodge any liquid in the container's cap.