

S-Tag Mouse Monoclonal Antibody (3B3)

CATALOG NUMBER: C1336

QUANTITY: 50 μ L

DESCRIPTION: S-tag is the name of an oligopeptide derived from pancreatic ribonuclease A (RNase A). When RNase A is digested with subtilisin, a single peptide bond is cleaved. The resulting two products remain weakly bound to each other and the protein called ribonuclease S remains active. However each of the two products alone shows no enzymatic activity. The N-terminus of the original RNase A also called S-peptide, consists of 20 amino acid residues, of which only the first 15 are required for ribonuclease activity. This 15 amino acids long peptide is called S15 or S-tag of which the amino acid sequence is: KETAAKFERQHMS.

SPECIFICITY: The S tag antibody can recognize S tag fusion proteins.

ISOTYPE: IgG1

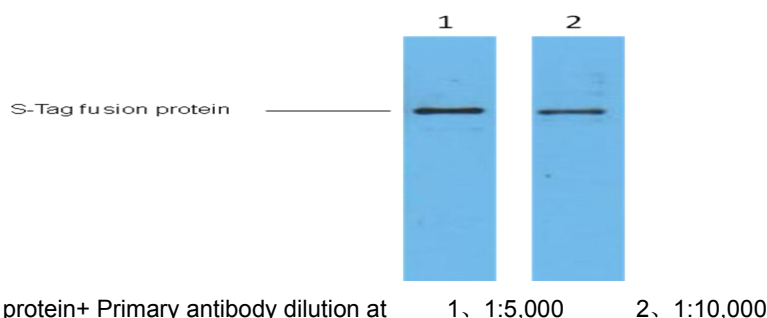
TESTED APPLICATIONS: Western Blot

APPLICATIONS: WB: 1:5,000

***NOTE:** Optimal working dilutions must be determined by the end user

STORAGE/HANDLING: PBS, pH 7.4, containing 0.02% sodium azide as Preservative and 50% Glycerol. Store at -20°C. **Do not aliquot the antibody.**

Western Blot



For research use only; not for use as a diagnostic.

Important Note: During shipment, small volumes of product will occasionally become entrapped in the seal of the product vial. For products with volumes of 200 μ L or less, we recommend gently dislodge any liquid in the container's cap.