

## mCherry-Tag Mouse Monoclonal Antibody (6B3)

**CATALOG NUMBER:** C1329

**QUANTITY:** 50 $\mu$ L

**DESCRIPTION:** mCherry is a fluorophore (a fluorescent molecule) used in biotechnology as a tracer to follow the flow of fluids, as a marker when tagged to molecules and cells components. mCherry is a monomeric fluorescent construct with peak absorption/emission at 587 nm and 610 nm, respectively. It is resistant to photobleaching and is stable. mCherry is sometimes preferred to other fluorophores due to its colour, as well as its photostability compared to other monomeric fluorophores.

**SPECIFICITY:** The mCherry tag antibody can recognize mCherry tag fusion proteins.

**ISOTYPE:** IgG1

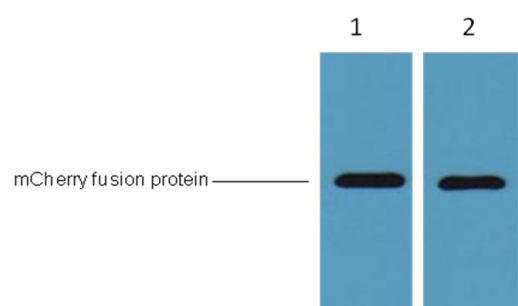
**TESTED APPLICATIONS:** WB

**APPLICATIONS:** WB: 1:5,000

**\*NOTE:** Optimal working dilutions must be determined by the end user

**STORAGE/HANDLING:** PBS, pH 7.4, containing 0.02% sodium azide as Preservative and 50% Glycerol. Store at -20°C. **Do not aliquot the antibody.**

### Western Blot



1 $\mu$ g mCherry fusion protein+ Primary antibody dilution at 1、 1:5,000 2、 1:10,000

***For research use only; not for use as a diagnostic.***

***Important Note:*** During shipment, small volumes of product will occasionally become entrapped in the seal of the product vial. For products with volumes of 200  $\mu$ L or less, we recommend gently dislodge any liquid in the container's cap.