

## $\beta$ -Actin Rabbit Polyclonal Antibody

**CATALOG NUMBER:** C1828

**QUANTITY:** 50 $\mu$ L

**DESCRIPTION:**  $\beta$ -Actin is one of six different actin isoforms that have been identified. The actin molecules found in cells of various species and tissues tend to be very similar in their immunological and physical properties. Therefore, Antibodies against  $\beta$ -Actin are useful as loading controls for Western Blotting. However it should be noted that levels of  $\beta$ -Actin may not be stable in certain cells. For example, the expression of  $\beta$ -Actin in adipose tissues is very low and therefore  $\beta$ -Actin should not be used as loading control for these tissues.

**SPECIFICITY:** H, R, M, Mk, Ch, Hm, Rb, Sh, Xenopus<sup>[1]</sup>

**ISOTYPE:** IgG1

**MOLECULAR WEIGHT:** 43KDa

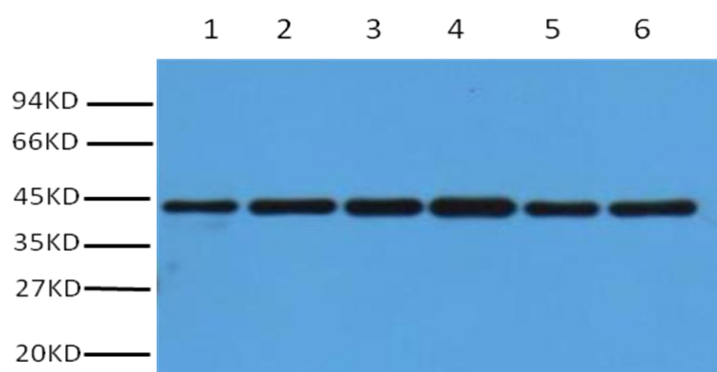
**TESTED APPLICATIONS:** Western Blot, Immunochemistry, Immunofluorescence

**APPLICATIONS:** WB: 1:3,000 IHC: 1:200 IF: 1:200

**\*NOTE:** Optimal working dilutions must be determined by the end user

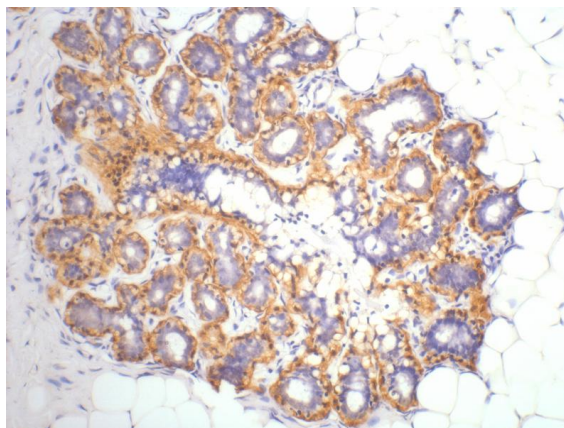
**STORAGE/HANDLING:** PBS, pH 7.4, containing 0.02% sodium azide as Preservative and 50% Glycerol. Store at -20°C. **Do not aliquot the antibody.**

### Western Blot



Western blot analysis of HepG2 (1), Rat liver (2), Mouse kidney (3), Rabbit testis (4), Sheep lung (5) and 293T(6) with  $\beta$ -Actin rabbit polyclonal antibody diluted at 1:5000.

## Immunohistochemistry



IHC staining of Human ovary tissue with  $\beta$ -Actin PAB diluted at 1:200.

***For research use only; not for use as a diagnostic.***

**Important Note:** The product listed herein is for research use only and is not intended for use in human or clinical diagnosis. Nothing disclosed herein is to be construed as a recommendation to use this product in violation of any patents. The information presented above is believed to be accurate. However, information and product are offered without warranty or guarantee since the ultimate conditions of use and the variability of the materials treated are beyond our control. We cannot be responsible for patent infringements or other violations that may occur with the use of this product. No claims beyond replacement of unacceptable material or refund of purchase price shall be allowed.

[1] H-Human    R-Rat    M-Mouse    Mk-Monkey    Ch-Chicken    Hm-Hamster    Rb-Rabbit  
Sh-Sheep