

## His-Tag Rabbit Polyclonal Antibody

**CATALOG NUMBER:** C1840

**QUANTITY:** 50 $\mu$ L

**DESCRIPTION:** A polyhistidine-tag is an amino acid motif in proteins that consists of at least five histidine (His) residues, often at the N- or C-terminus of the protein. Monoclonal antibodies specific to six histidine tags can greatly improve the effectiveness of several different kinds of immunoassays, helping researchers identify, detect, and purify polyhistidine fusion proteins in bacteria, insect cells, and mammalian cells.

**SPECIFICITY:** The His tag antibody can recognize C-terminal, internal, and N-terminal His-tag fusion proteins.

**ISOTYPE:** IgG

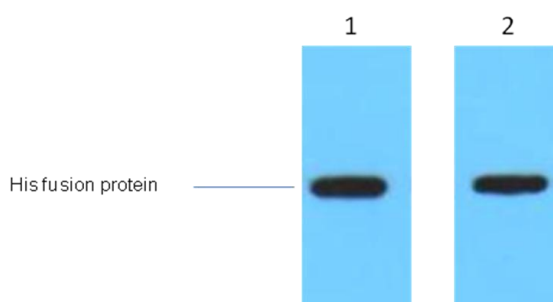
**TESTED APPLICATIONS:** Western Blot

**APPLICATIONS:** WB: 1:5,000

**\*NOTE:** Optimal working dilutions must be determined by the end user

**STORAGE/HANDLING:** PBS, pH 7.4, containing 0.02% sodium azide as Preservative and 50% Glycerol. Store at -20°C. **Do not aliquot the antibody.**

### Western Blot



1 $\mu$ g His fusion protein+ Primary antibody dilution at 1、 1:5,000 1、 1:10,000

***For research use only; not for use as a diagnostic.***

***Important Note:*** During shipment, small volumes of product will occasionally become entrapped in the seal of the product vial. For products with volumes of 200  $\mu$ L or less, we recommend gently dislodge any liquid in the container's cap.