

Flag-Tag Rabbit Polyclonal Antibody

CATALOG NUMBER: C1316

QUANTITY: 100 μ L

DESCRIPTION: The DYKDDDDK peptide (Flag-tag) is a small component of an epitope which does not appear to interfere with the bioactivity or the biodistribution of the recombinant protein. It has been used extensively as a general epitope tag in expression vectors. It can be used for affinity chromatography, overexpressed protein from wild-type protein expressed by the host organism. It can also be used in the isolation of protein complexes with multiple subunits.

SPECIFICITY: The Flag tag antibody can recognize C-terminal, internal, and N-terminal Flag-tag fusion proteins.

ISOTYPE: IgG

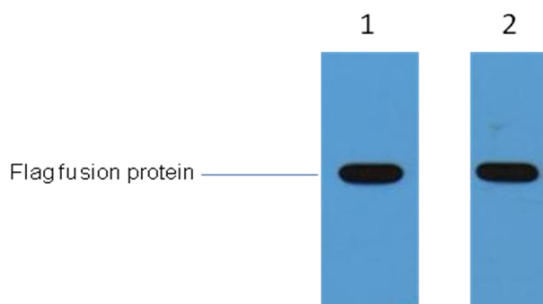
TESTED APPLICATIONS: Western Blot

APPLICATIONS: WB: 1:5,000

***NOTE:** Optimal working dilutions must be determined by the end user

STORAGE/HANDLING: PBS, pH 7.4, containing 0.02% sodium azide as Preservative and 50% Glycerol. Store at -20°C. **Do not aliquot the antibody.**

Western Blot



1 μ g Flag fusion protein+ Primary antibody dilution at 1、 1:5,000 1、 1:10,000

For research use only; not for use as a diagnostic.

Important Note: During shipment, small volumes of product will occasionally become entrapped in the seal of the product vial. For products with volumes of 200 μ L or less, we recommend gently dislodge any liquid in the container's cap.