

β -Tubulin Mouse Monoclonal Antibody (5G3)

CATALOG NUMBER: C1340

QUANTITY: 100 μ l 250 μ l

DESCRIPTION: Microtubules are constituent parts of the mitotic apparatus, cilia, flagella, and elements of the cytoskeleton. They principally consist of 2 soluble proteins, alpha- and beta-tubulin. Antibodies against beta Tubulin are useful as loading controls for Western Blotting. However it should be noted that levels of β -Tubulin may not be stable in certain cells. For example, the expression of β -Tubulin in adipose tissues is very low and therefore β -Tubulin should not be used as loading control for these tissues.

SPECIFICITY: H, R, M, Mk, Dg, Ch, Hm, Rb, Sh^[1]

ISOTYPE: IgG1

MOLECULAR WEIGHT: 55KDa

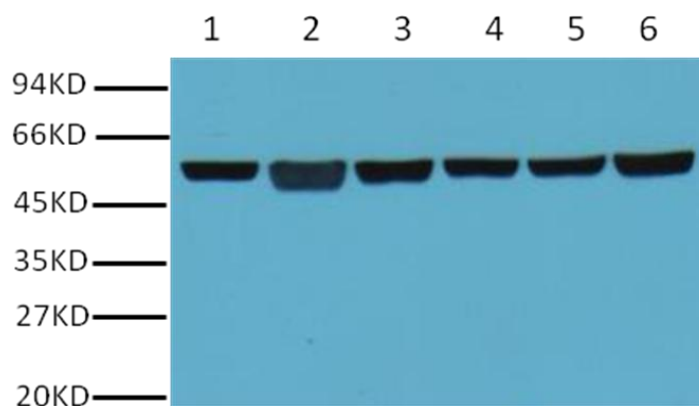
TESTED APPLICATIONS: Western Blot Immunocytochemistry

APPLICATIONS: WB: 1:5,000 IHC: 1:200

***NOTE:** Optimal working dilutions must be determined by the end user

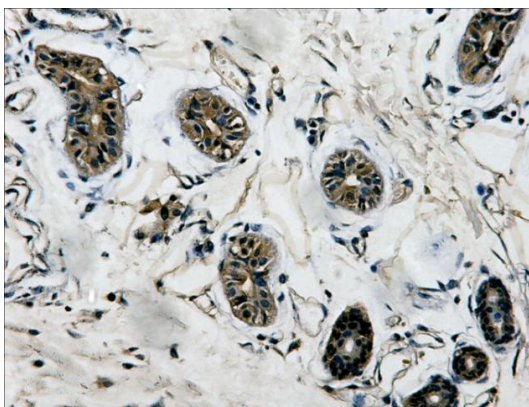
STORAGE/HANDLING: PBS, pH 7.4, containing 0.02% sodium azide as Preservative and 50% Glycerol. Store at -20°C. **Do not aliquot the antibody.**

Western Blot



Western blot analysis of A549 (1), Rat brain (2), Mouse brain (3), Chicken lung (4), Rabbit testis (5) and Sheep muscle (6) with β -tubulin mouse mAb(5G3) diluted at 1:5000.

Immunocytochemistry



IHC Staining of Human colon tissue with β -tubulin mouse mAb(5G3) diluted at 1:200.

For research use only; not for use as a diagnostic.

Important Note: The product listed herein is for research use only and is not intended for use in human or clinical diagnosis. Nothing disclosed herein is to be construed as a recommendation to use this product in violation of any patents. The information presented above is believed to be accurate. However, information and product are offered without warranty or guarantee since the ultimate conditions of use and the variability of the materials treated are beyond our control. We cannot be responsible for patent infringements or other violations that may occur with the use of this product. No claims beyond replacement of unacceptable material or refund of purchase price shall be allowed.

[1] H-Human R-Rat M-Mouse Mk-Monkey Dg-Dog Ch-Chicken Hm-Hamster
Rb-Rabbit Sh-Sheep