



ATG5 Mouse Monoclonal Antibody (3C7)

CATALOG NUMBER: C2430

QUANTITY: 50ul 100ul

DESCRIPTION: Autophagy is generally activated by conditions of nutrient deprivation but has also been associated with a number of physiological processes including development, differentiation, neurodegeneration, infection, and cancer. Formation of the autophagosome involves a ubiquitin-like conjugation system in which Atg12 is covalently bound to Atg5 and targeted to autophagosome vesicles. This conjugation reaction is mediated by the ubiquitin E1-like enzyme Atg7 and the E2-like enzyme Atg10.

ALTERNATIVE NAMES: APG5, APG5L, ASP, Autophagy protein 5

ISOTYPE: IgG1

REACTIVITY: Human Rat Mouse

MW: 55KDa

TESTED APPLICATIONS: IHC WB

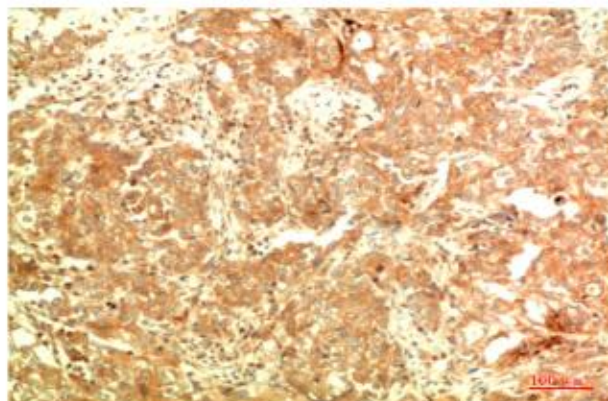
APPLICATIONS: IHC: 1:100-1:300 WB:1:3000-1:10000

***NOTE:** Optimal working dilutions must be determined by the end user

STORAGE/HANDLING: PBS, pH 7.4, containing 0.02% sodium azide as Preservative and 50% Glycerol.

Store at -20°C. **Do not aliquot the antibody.**

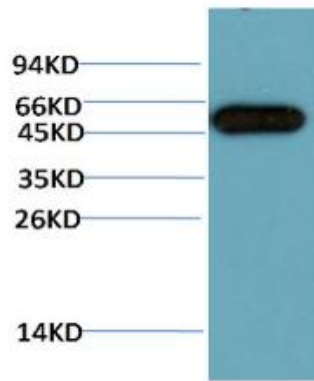
IHC



Immunohistochemical analysis of paraffin-embedded Human Breast Carcinoma Tissue using ATG5 Mouse mAb diluted at 1:200.



WB



Western blot analysis of HeLa Cell Lysate using ATG5 Mouse mAb diluted at 1:10000.

For research use only; not for use as a diagnostic.

Important Note: During shipment, small volumes of product will occasionally become entrapped in the seal of the product vial. For products with volumes of 200 μ L or less, we recommend gently dislodge any liquid in the container's cap.