



## Gamma Tubulin Mouse Monoclonal Antibody (6C12)

CATALOG NUMBER: C2427

QUANTITY: 50ul 100ul

**DESCRIPTION:**  $\gamma$ -tubulin forms complexes of two different sizes:  $\gamma$ -tubulin small complex ( $\gamma$ -TuSC) and the larger  $\gamma$ -tubulin ring

**SPECIES CROSS-REACTIVITY:** Human, Rat, Mouse

**SPECIFICITY:** The gamma tubulin antibody can detects endogenous gamma tubulin protein.

**ISOTYPE:** IgG1

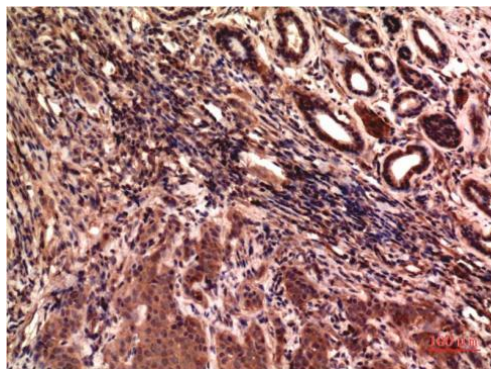
**MOLECULAR WEIGHT:** ~50KDa

**TESTED APPLICATIONS:** Western Blot IHV

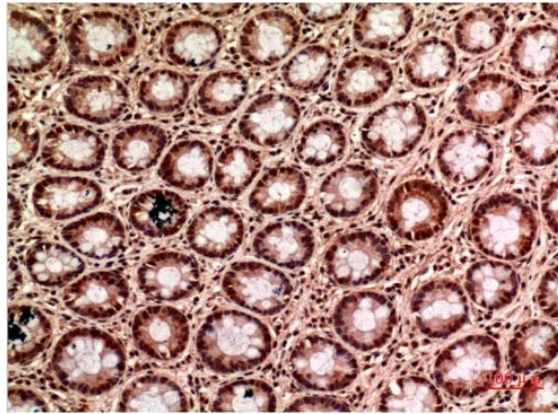
**APPLICATIONS:** Western blot: 1:1,000-1:2,000  
IHC: 1:100-1: 200

**\*NOTE:** Optimal working dilutions must be determined by the end user

**STORAGE/HANDLING:** PBS, pH 7.4, containing 0.02% sodium azide as Preservative and 50% Glycerol.  
Store at -20°C. **Do not aliquot the antibody.**



*Immunohistochemical analysis of paraffin-embedded Human Breast Carcinoma Tissue using Gamma Tubulin Mouse mAb diluted at 1:200.*



Immunohistochemical analysis of paraffin-embedded Human Colon Carcinoma Tissue using Gamma Tubulin Mouse mAb diluted at 1:200.

***For research use only; not for use as a diagnostic.***

***Important Note:*** The product listed herein is for research use only and is not intended for use in human or clinical diagnosis.